



## EXTRACTION PROCESS



**SP-QCH100  
WEDGE PULLER**

## WARNING

**SAFETY SHOULD BE YOUR PRIMARY OBJECTIVE  
IN THE EXTRACTION AND INSERTION OF THE SOLLAMI QUICK CHANGE HOLDER**

**Take all necessary precautions outlined by your employer and OSHA regulations when handling, installing, and/or extracting any Sollami Company products. This includes, but is not limited to, wearing Personal Protective Equipment. It is recommended that a person wears safety glasses and/or a face shield to avoid contact with chipping or flying debris.**

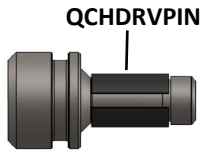
Office: 800-992-1521—Fax: 618-988-9751—E-mail: [soco1@sollamico.com](mailto:soco1@sollamico.com)

Visit us at [www.sollamimilling.com](http://www.sollamimilling.com) or [www.sollamico.com](http://www.sollamico.com)

09/18/15

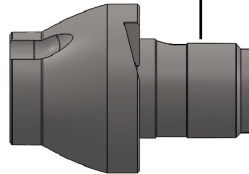


## INSERTION PROCESS

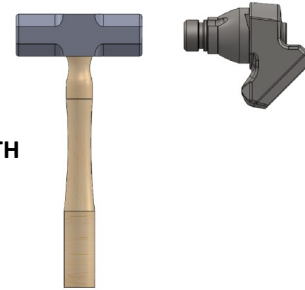


INSERT THE DRIVE PIN INTO THE BIT HOLDER.

STEP #1



COVER THE SHANK OF THE BIT HOLDER LIBERALLY WITH THE PROVIDED ANTI-SEIZE.



STEP #2

USE A 5 LB HAMMER TO STRIKE THE DRIVE PIN, DRIVING THE BIT HOLDER UNTIL THE REAR ANNULAR FLANGE SEATS AGAINST THE FACE OF THE BASE BLOCK.

## WARNING

SAFETY SHOULD BE YOUR PRIMARY OBJECTIVE  
IN THE EXTRACTION AND INSERTION OF THE SOLLAMI QUICK CHANGE HOLDER

Take all necessary precautions outlined by your employer and OSHA regulations when handling, installing, and/or extracting any Sollami Company products. This includes, but is not limited to, wearing Personal Protective Equipment. It is recommended that a person wears safety glasses and/or a face shield to avoid contact with chipping or flying debris.

Office: 800-992-1521—Fax: 618-988-9751—E-mail: [soco1@sollamico.com](mailto:soco1@sollamico.com)

Visit us at [www.sollamimilling.com](http://www.sollamimilling.com) or [www.sollamico.com](http://www.sollamico.com)

09/18/15