



EXTRACTION PROCESS

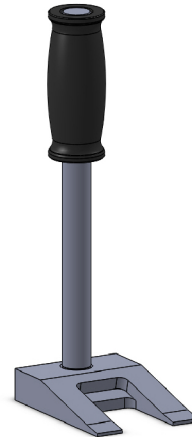


WARNING

SAFETY SHOULD BE YOUR PRIMARY OBJECTIVE

IN THE EXTRACTION AND INSERTION OF THE SOLLAMI QUICK CHANGE HOLDER

Take all necessary precautions outlined by your employer and OSHA regulations when handling, installing, and/or extracting any Sollami Company products shown in this document. This includes, but is not limited to, staying out of the trajectory path to avoid contact with chipping or flying debris while wearing Personal Protective Equipment (PPE) such as safety glasses or a face shield.



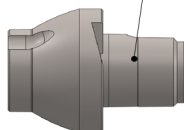
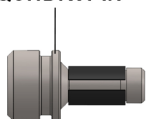
SP-QCH100
WEDGE PULLER

Office: 800-992-1521 - Fax: 618-988-9751 - E-mail: soco1@sollamico.com
Visit us at www.sollamimilling.com or www.sollamico.com



INSERTION PROCESS

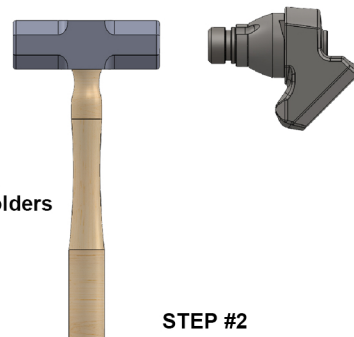
QCHDRV PIN



Anti-seize is not recommended
for the new & improved RTS holders
P.N. QCH76CDTN-RTS

INSERT THE DRIVE PIN INTO THE BIT HOLDER.

STEP #1



STEP #2

USE A 5 LB HAMMER TO STRIKE THE
DRIVE PIN, DRIVING THE BIT HOLDER
UNTIL THE REAR ANNULAR FLANGE
SEATS AGAINST THE FACE OF THE
BASE BLOCK.

WARNING

SAFETY SHOULD BE YOUR PRIMARY OBJECTIVE
IN THE EXTRACTION AND INSERTION OF THE SOLLAMI QUICK CHANGE HOLDER

Take all necessary precautions outlined by your employer and OSHA regulations when handling, installing, and/or extracting any Sollami Company products shown in this document. This includes, but is not limited to, staying out of the trajectory path to avoid contact with chipping or flying debris while wearing Personal Protective Equipment (PPE) such as safety glasses or a face shield.

Office: 800-992-1521 - Fax: 618-988-9751 - E-mail: soco1@sollamico.com
Visit us at www.sollamimilling.com or www.sollamico.com